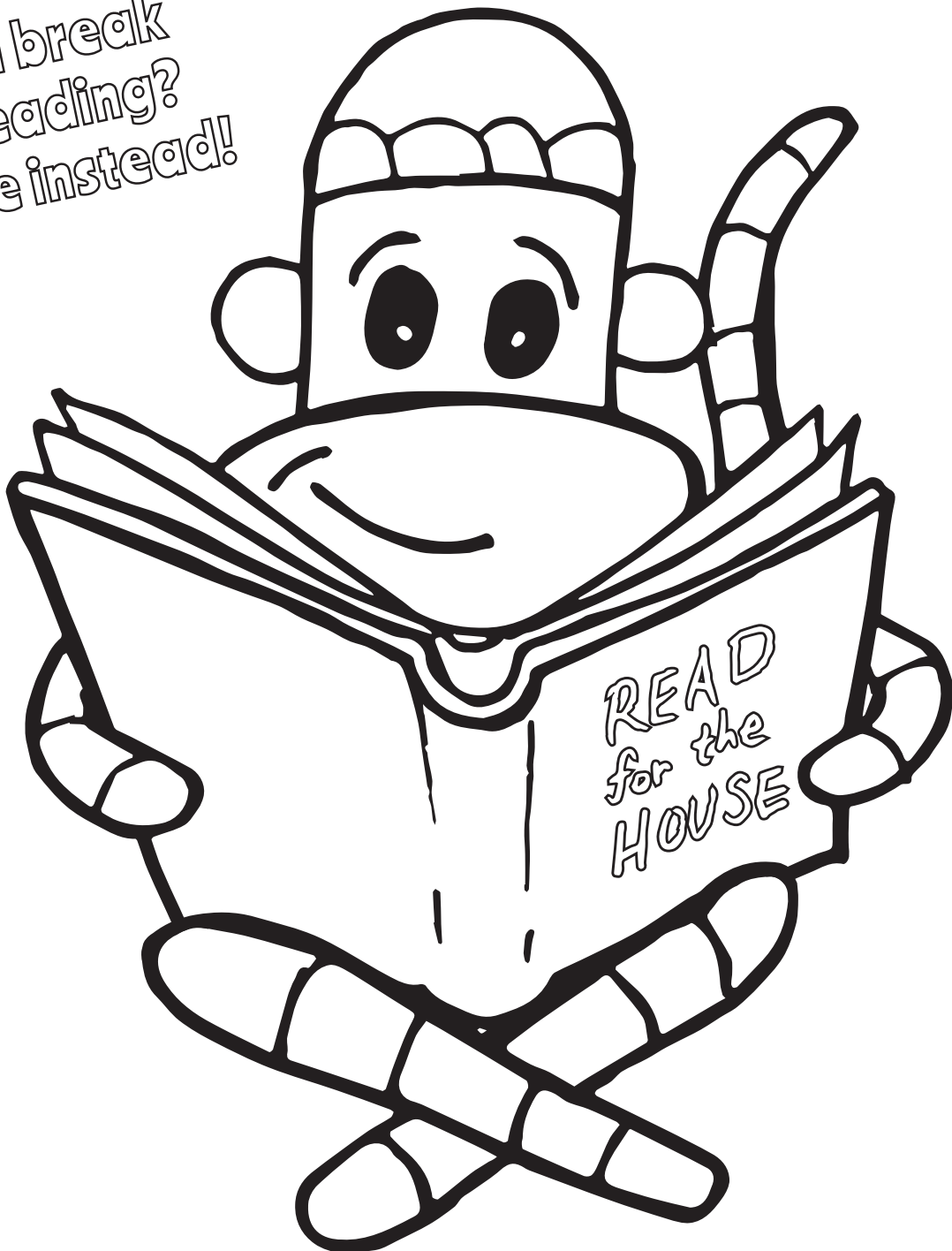




Ronald McDonald  
House Charities®  
Philadelphia Region

# READ for the HOUSE

*Need a break  
from reading?  
Color me instead!*



# READ for the HOUSE STUDENT PACKET



Ronald McDonald  
House Charities®  
Philadelphia Region

Hi reader! Do you love to read as much as we do, or maybe are you trying to improve your reading skills? We can help you reach your reading goals and have fun doing so! Join the Ronald McDonald House all month long in February to read your favorite books and help children who are feeling sick. Your reading makes them feel love and support, and you can earn fun prizes, too!

## TIMELINE:



### JANUARY:

Learn about why reading is so important by watching our Read for the House video on our website ([RMHCphilly.org/Read](http://RMHCphilly.org/Read))!

### FEBRUARY:

Read as much as you can throughout the month and keep track of how many minutes you read using the calendar we provide.

**The more you read, the more prizes you'll get!**

Check out the prizes on the next page.

### MARCH:

Great job reading! Ask your parent or guardian to help you collect donations in honor of your reading efforts by reaching out to your supporters.

## SETTING UP YOUR WEBPAGE:

1. Visit [RMHCphilly.org/Read](http://RMHCphilly.org/Read), and click on "Register Now."
2. Review the agreement. (Please note: there are no fundraising requirements to participate in this program.)
3. Select "Reader." Find your school's team by clicking on the "Search" button below "Find a Team to Join." If you are participating on your own, search for the Ronald McDonald House readers and join our team.
4. Pick a fundraising goal that you think you can reach. You can change your fundraising goal at any time.
5. Complete the form to create a username and password for your fundraising account. If you created an account last year, you can log in using the same username and password, but will need to create a new fundraising page for this year. If you need help resetting your password, contact Alyssa McHugh.
6. Customize the fundraising page with photos, a story, and anything else you would like to share.
7. Now you are ready to spread the word that you are reading and raising money for the House!



presented by





Ronald McDonald House Charities Philadelphia Region

# PRIZES:

When you reach a fundraising level, you'll receive the prize at that level, and all of the prizes in lower levels!

## RAISE \$1:

Get a certificate, RMHC Philly button, a free cookie from Famous 4th Street Cookie Company, and a free water ice from Rita's



## RAISE \$100:

Get 2 tickets to The Constitution Center and 2 passes to Crayola Experience



## RAISE \$250:

Get 2 passes to LEGOLAND



## RAISE \$500:

Get 4 tickets to Sesame Place



## RAISE \$1,000:

Get 2 tickets to a Phillies game (date TBD) and 2 passes to the Big Bus Philly sightseeing tour



## RAISE \$2,500:

Get a Virtual Reality Set (choose from Ocean, Space, or Wildlife Adventure theme)



## OVERALL HIGHEST FUNDRAISER

The student who raises the MOST money throughout the entire program will win 4 tickets to the Philadelphia Flyers vs. NY Islanders game on April 12 at 12:30 pm!








Ronald McDonald House Charities® Philadelphia Region

# READ for the HOUSE

## FEBRUARY 2025

SUN	MON	TUES	WED	THURS	FRI	SAT
 <p>Every minute you read throughout February helps families with children who are being treated at local hospitals!</p> <p>presented by  <b>ADVANTAGE AUTO TAGS</b></p>						<p><b>1</b> How many pages does your book have?</p> <p><b>TOTAL MINUTES READ</b> <input type="text"/></p>
<p><b>2</b> Who taught you to read?</p> <p><b>TOTAL MINUTES READ</b> <input type="text"/></p>	<p><b>3</b> Who is the author of the book you are reading?</p> <p><b>TOTAL MINUTES READ</b> <input type="text"/></p>	<p><b>4</b> What did you read today?</p> <p><b>TOTAL MINUTES READ</b> <input type="text"/></p>	<p><b>5</b> Take turns reading out loud with your friends today!</p> <p><b>TOTAL MINUTES READ</b> <input type="text"/></p>	<p><b>6</b> What do you like most about reading?</p> <p><b>TOTAL MINUTES READ</b> <input type="text"/></p>	<p><b>7</b> What is the main character's name in your book?</p> <p><b>TOTAL MINUTES READ</b> <input type="text"/></p>	<p><b>8</b> Where does your book take place?</p> <p><b>TOTAL MINUTES READ</b> <input type="text"/></p>
<p><b>9</b> We  Read for the House!</p> <p><b>TOTAL MINUTES READ</b> <input type="text"/></p>	<p><b>10</b> Which character in your book would you like to be friends with?</p> <p><b>TOTAL MINUTES READ</b> <input type="text"/></p>	<p><b>11</b> What new word did you learn this week?</p> <p><b>TOTAL MINUTES READ</b> <input type="text"/></p>	<p><b>12</b> What did you read today?</p> <p><b>TOTAL MINUTES READ</b> <input type="text"/></p>	<p><b>13</b> What book do you want to read next?</p> <p><b>TOTAL MINUTES READ</b> <input type="text"/></p>	<p><b>14</b> How many pages does your book have?</p> <p><b>TOTAL MINUTES READ</b> <input type="text"/></p>	<p><b>15</b> <b>You're almost there! Keep on reading!</b></p> <p><b>TOTAL MINUTES READ</b> <input type="text"/></p>
<p><b>16</b> Did you know you can collect your soda can tabs for RMHC Philly? Learn more at <a href="http://RMHCphilly.org/Recycle">RMHCphilly.org/Recycle</a>.</p> <p><b>TOTAL MINUTES READ</b> <input type="text"/></p>	<p><b>17</b> What did you read today?</p> <p><b>TOTAL MINUTES READ</b> <input type="text"/></p>	<p><b>18</b> What time of day do you like to read the most?</p> <p><b>TOTAL MINUTES READ</b> <input type="text"/></p>	<p><b>19</b> How many chapters did you read today?</p> <p><b>TOTAL MINUTES READ</b> <input type="text"/></p>	<p><b>20</b> We are so proud of you for reading to help other kids!</p> <p><b>TOTAL MINUTES READ</b> <input type="text"/></p>	<p><b>21</b> Who is your favorite teacher?</p> <p><b>TOTAL MINUTES READ</b> <input type="text"/></p>	<p><b>22</b> What new word did you learn this week?</p> <p><b>TOTAL MINUTES READ</b> <input type="text"/></p>
<p><b>23</b> See if you can read five extra pages today!</p> <p><b>TOTAL MINUTES READ</b> <input type="text"/></p>	<p><b>24</b> What did you read today?</p> <p><b>TOTAL MINUTES READ</b> <input type="text"/></p>	<p><b>25</b> What is your favorite story you've read?</p> <p><b>TOTAL MINUTES READ</b> <input type="text"/></p>	<p><b>26</b> What did you read today?</p> <p><b>TOTAL MINUTES READ</b> <input type="text"/></p>	<p><b>27</b> What grade would you give the book you are reading?</p> <p><b>TOTAL MINUTES READ</b> <input type="text"/></p>	<p><b>28</b> It's your last day! See if you can read 5 extra minutes.</p> <p><b>TOTAL MINUTES READ</b> <input type="text"/></p>	<p>Add up all of your minutes!</p> <p><b>MY READING GRAND TOTAL</b></p> <input type="text"/>

# READ for the HOUSE

## SUPPORTER TRACKING SHEET



Ronald McDonald House Charities®  
Philadelphia Region

Student Full Name: \_\_\_\_\_

School Name: \_\_\_\_\_

Teacher Name: \_\_\_\_\_ Grade: \_\_\_\_\_

**USE THIS FORM TO  
KEEP TRACK OF ALL  
OF YOUR PLEDGED  
DONATIONS**

**TOTAL  
MINUTES  
READ**

**TOTAL  
FUNDRAISING  
AMOUNT**

\$

Sponsor Name (First & Last)	\$ Pledged Per Minute	Total # Mins Read	Total \$ Donated
ex: Grandma and Grandpa	25 Cents	413	\$103.25

### IMPORTANT INFORMATION

- Payments should be made online. Visit [RMHCphilly.org/Read](http://RMHCphilly.org/Read) to make a donation by debit/credit card.
- Donations are tax deductible as allowed by law.
- If donating by check is necessary, checks should be made payable to Ronald McDonald House Charities of the Philadelphia Region. Please mail it to the address below and include the student name, school name, and Read for the House along with the check so your child gets proper credit for the donation. Email [alyssa@rmhcphilly.org](mailto:alyssa@rmhcphilly.org) to notify her a check should be expected.

Attention: Alyssa McHugh/Read for the House  
RMHC Philly  
3925 Chestnut Street  
Philadelphia, PA 19104



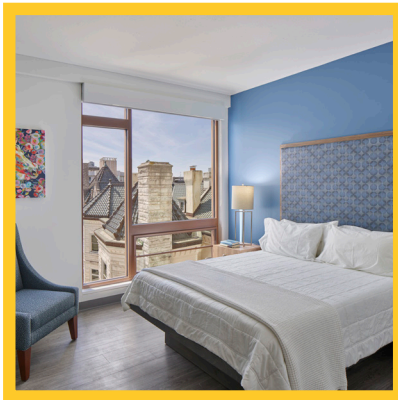
Ronald McDonald House Charities®  
Philadelphia Region

# All About Ronald McDonald House Charities of the Philadelphia Region

## OUR MISSION:

Ronald McDonald House Charities of the Philadelphia Region supports families on their children's medical journeys with a community of comfort and hope.

## OUR PROGRAMS:



### 2 Houses

Ronald McDonald Houses are special places where families can sleep, eat, and get help when they travel to Philadelphia so their child can get the care they need.



### 3 Family Rooms

Our three Ronald McDonald Family Rooms bring the comfort of our Houses into the hospital. They give families a quiet place to relax at Children's Hospital of Philadelphia and St. Christopher's Hospital for Children.



### 1 Camp

Ronald McDonald Camp is a special sleepaway camp in the Pocono Mountains where kids with cancer and their brothers or sisters can have fun for a whole week every August



### 1 Care Mobile

The Ronald McDonald Care Mobile is a big van that helps kids in North Philadelphia take care of their teeth. It's run with help from St. Christopher's Foundation for Children.

## ABOUT OUR SPONSOR:

Read for the House is sponsored by The Kramer Family and its businesses, Advantage Insurance and Newtown Insurance Professionals. The Kramer Family became involved at the Ronald McDonald House 16 years ago, volunteering a few days each month through the Therapy Dog Program. Now, they sponsor events, raise money, collect tabs at local schools, support the Food Services program, and of course, are still active with the Therapy Dog Program. Giving back is the core of who they are as a family, and how they run their businesses. They are so proud to support RMHC Philly in their efforts to provide lodging, food, and transportation to and from the hospitals for families of seriously ill children. The Kramer Family and their businesses are proud to sponsor the 2025 Read for the House program.

**Stay Connected!**



@RMHCphilly | [www.RMHCphilly.org](http://www.RMHCphilly.org)